

Superheroes Among Us, sponsored by UJF, recognized all Stamford community superheroes on September 7, 2025 including TBE President Jeff Cohen and Rabbi Gerry Ginsburg.

Annual High Holiday Food Drive to Benefit Person to Person



Semi-Annual Sisterhood Clothing Drive



TEMPLE BETH EL - BOARD OF TRUSTEES**EXECUTIVE COMMITTEE**

Jeffrey Cohen, President	203-912-8737
Scott Krowitz, Immediate Past President	917-902-1447
Devra Jaffe-Berkowitz, First Vice President	203-978-1113
Kahla Cooper, Vice President	203-554-7888
Leslie Glenn, Vice President	203-273-7215
Jeffrey Turshen, Vice-President	203-323-3872
Ron Zussman, Vice-President	914-826-7082
Susan Frieden, Treasurer	203-869-4282
Marilyn Galler Sofer, Secretary	917-282-4993

ADVISORS

Stan Friedman	203-322-0416
Lisa Manheim	917-690-2712

TRUSTEES

Emma Adler	347-229-8904
Debra Adler-Klein	203-253-1664
Stephen Bedik	845-800-3892
Alan Benet	914-953-7778
Amy Davidson	203-832-2909
Melissa Dreyfus-Erner	914-224-4475
Jon Eisenstein	203-321-8369
Suzanne Fruithandler	203-940-4212
Dana L. Horowitz	203-321-0018
Vicki Kobliner	203-253-9784
Erica Kraypohl	203-273-0246
Marsha Matthews	203-962-2628
Jonathan Phair	646-530-4707
Melody Prenner-Bryant	917-796-6030
Joyce Resnick	678-595-9115
Karen Resnick	203-536-3115
Sol Rose	203-331-2132

SISTERHOOD CO-PRESIDENTS

Juli Harris-Sekuler	203-324-1433
Nancy Kapchan	203-435-0389

MEN'S CLUB PRESIDENT

Carl Shapiro	203-273-1968
--------------	--------------

PAST PRESIDENTS

Gordon Brown	203-440-4507
Rosalea Fisher	203-323-1449
Fred S. Golove	203-322-0295
Alan Kalter, z'l	
Peter K. Kempner	203-968-8079
Mark Lapine	203-329-9879
Gary P. Lessen	203-322-7617
Lisa Manheim	917-690-2712
Sylvan D. Pomerantz	203-968-0605
Eileen H. Rosner	203-461-0506
Carl R. Weinberg	203-322-8675
Mia M. Weinstein	203-595-0528

WHERE TO FIND IT

Michael Knopf, Senior Rabbi	Page 3
Katie Kaplan, Cantor	Page 3
Joshua Hammerman, Rabbi Emeritus	Page 4
Abby Allen, Rabbinic Intern	Page 4
B'nai Mitzvah	Page 6
Keshet Beth El	Page 8
Sisterhood	Page 14

COMMITTEE CHAIRPERSONS**Adult Education**

Stan Friedman	203-322-0416
---------------	--------------

Finance

Susan Frieden	203-869-4282
Jonathan Phair	646-530-4707

Fund Raising

Ron Zussman	914-826-7082
-------------	--------------

High Holy Days Task Force

Devra Jaffe-Berkowitz	203-978-1113
-----------------------	--------------

High Holy Days Food Drive

Sharon Turshen	203-323-3872
----------------	--------------

Human Resources

Leslie Glenn	203-273-7215
--------------	--------------

Kulanu Committee

Marilyn Galler Sofer	917-282-4993
----------------------	--------------

Marketing and Communications

Stan Friedman	203-322-0416
---------------	--------------

Membership Committee

Kahla Cooper	203-554-7888
--------------	--------------

Project Ezra

Debra Adler-Klein	203-253-1664
-------------------	--------------

Reyut Committee

Melanie Massell	203-274-1708
-----------------	--------------

Ritual Committee

Mia M. Weinstein	203-595-0528
------------------	--------------

Social Action/Tzedek Committee

Debra Adler-Klein	203-253-1664
Elissa Garber Hyman	203-979-0294

OUR STAFF IS MOST EAGER TO ASSIST YOU**Monday-Thursday, 9am-5:00 pm | Friday, 9am - 2:00pm****Phone: 203-322-6901 Fax: 203-322-0532**

Michael Knopf, Senior Rabbi (rabbiknopf@tbe.org)	ext. 307
Katie Kaplan, Cantor (cantor@tbe.org)	ext. 315
Erica Newman, Executive Director (execdir@tbe.org)	ext. 304
Leo Linder, Director Keshet Beth El (eddir@tbe.org)	ext. 305
Gerry Ginsburg, Associate Rabbi (rabbiginsburg@tbe.org)	ext. 300
Joshua Hammerman, Rabbi Emeritus (joshuah@tbe.org)	
Linda Rezak, Bookkeeper (lindar@tbe.org)	ext. 302
Mindy Rogoff, Temple Secretary (office@tbe.org)	ext. 301
Rad Vazquez, Facilities Manager (maint@tbe.org)	ext. 314

MICHAEL ROSE KNOPF, SENIOR RABBI

Over the High Holy Days, many of you asked me to share the *Prayer for the United States of America* that we recited together. I am grateful for that response, and I thought I might not only share the words, but also a bit about how this particular version came to be.



Prayers for the welfare of the country are part of a very old Jewish tradition. The prophet Jeremiah, writing to the exiled Jewish community in Babylon, instructed them: “*Seek the peace of the city to which I have exiled you, and pray to God on its behalf, for in its peace you shall find peace*” (Jeremiah 29:7). Jewish communities have long taken that charge seriously, offering prayers on behalf of the nations where they lived.

American Jews have composed many prayers for the U.S. over the years, often sharing a common theme: That democracy, with its ideals of liberty, equality, and justice, is fragile, and it requires both divine blessing and human commitment to endure. We thrive when those ideals are upheld; we suffer when they are eroded.

Around 2018, I began to feel that the traditional versions of the prayer for the U.S. did not quite capture the challenges I believed we were uniquely confronting in our country at that time: Corruption and abuses of power, the targeting of vulnerable communities, and the need for all of us to take seriously our responsibilities as citizens. Out of that desire, I wrote my own version, drawing on Jewish liturgy, biblical language, and American civic ideals. That prayer was a way of channeling both my gratitude for this country and my concern for its direction into words of faith and hope.

Ever since composing that version, I have been regularly using it in worship, and even published it in my 2021 book, [*No Time for Neutrality: American Rabbinic Voices from an Era of Upheaval*](#).

But as I approached this year’s High Holy Days, I came to feel that it needed to be reshaped. In recent years, it has become painfully clear that democracy is not guaranteed. The institutions and norms that have safeguarded our community — and so many others — are more vulnerable than we may have realized. At the same time, new forms of cruelty and division threaten to corrode our shared life together.

The new version I composed, which we read this year during the High Holy Days and which I am sharing below, grew out of my reflections on the moment we are living in now. It keeps the same basic structure as my previous prayer but shifts its emphasis. It still gives thanks for the blessings of America — the ideals and institutions that have been our safety and our strength — but it now asks that we be fortified against unjust decrees, that we find the courage to hold leaders accountable, that we not stand idly by when others suffer, and that we refuse to surrender to despair. It insists that “We the People,” in all our diversity, are siblings

Continued on page 18...

KATIE KAPLAN, CANTOR

Introducing Leo Linder, Cantorial Intern

At this point in time, most of you are probably familiar with our fantastic director of the Keshet Beth El religious school, Leo Linder. But you may not be aware that Leo is also currently serving this fall as a Cantorial Intern! This role is part of their studies at the Academy for Jewish Religion (AJR) where they are pursuing Kol Bo Ordination as BOTH a Cantor and a Rabbi (You may have heard of one of AJR’s illustrious graduates, Rabbi Gerry Ginsburg!). As part of their time in this role, you may find Leo leading more of the davening during services, assisting in life cycle events, and uplifting our congregation by providing musical and spiritual support. I’d like to turn the rest of this column over to Leo so that they can tell you a little bit more about their Jewish journey.

Cantor Katie Kaplan



Chazanut is in my blood. My zeyde, the “Reverend” Shimon Paktor, led services for many years at his shul in Schenectady, though he was never ordained. One of my strongest memories of him is from when I was preparing for my B’Mitzvah: I called to share what I

had learned in my first lesson on Haftarah trope, and he stopped me in my tracks. “That is not the chazanish way to do it!” he scolded, and he taught me his (admittedly much cooler) style. I still use that version today, though most of the other melodies I’ve learned come from another important cantorial influence in my life, Cantor Joel Caplan of Agudath Israel in West Caldwell, NJ. Under Cantor Caplan’s leadership, I became a Jewish choral singer, starting in elementary school with the Tov M’od choir before graduating to the HaZamir teen choir. I even talked him into letting me join the adult High Holiday choir at 11! That’s around when I started reading Torah, and got very into my favorite holiday, Simchat Torah. So, when I went off to college, what could I do but step up as a service leader in Hillel? While I did have a bit of a detour in my previous career (I spent 15 years teaching Latin and Ancient Greek.), I’ve been slowly inching towards the cantorate my whole life, and I’m so excited to be officially on the path towards this lifelong dream!

Leo Linder



ABBY ALLEN, RABBINIC INTERN

Hi TBE! My name is Abby Allen, and I am excited to be the rabbinical intern at Temple Beth El this year. I am a third-year student at the Jewish Theological Seminary.

As part of my internship this year, I am excited to be working with Rabbi Knopf and others at TBE to launch a new initiative, *Beth El B'Yachad - TBE Together*.

Beth El B'Yachad - TBE Together is about strengthening our community. Judaism is reliant on community; we cannot call ourselves to prayer without a minyan. We cannot say the mourners' Kaddish without a group of ten. Our tradition is devised to be one of connection. In the moments when we may seek to isolate, Judaism insists that we gather. As Rabbi Jonathan Sacks wrote, "Community is the human expression of Divine love. It is where I am valued simply for who I am, how I live, and what I give to others. It is the place where they know my name."

So far this year, I have had the privilege of joining the TBE community for Kabbalat Shabbat, Shabbat morning services, Sunday morning minyan, and Keshet Beth El. Each of these spaces is distinct, yet they all foster a shared sense of warmth and belonging. But community connections go beyond the walls of the synagogue. To be in community is to share hobbies, life stages, and cultural identities.

Beth El B'Yachad - TBE Together will bring members together in small groups to connect through shared interests, identities, and life stages. *Beth El B'Yachad* is an opportunity to build meaningful relationships and deepen our connections within the TBE community.

Groups may gather weekly, monthly, or even just a few times a year. Some may meet for a shared activity, like a weekly walk; others might host a Shabbat dinner to share life experiences or discuss a thought-provoking article or book. Examples of the types of groups are: Walking Group, 20s & 30s Group, Parents of School-Age Kids Group, or Interfaith Families Group. While these groups will all be lay led, we'll provide everyone with guidance and support along the way.

Over time, our goal is for every TBE member to be part of at least one of these small groups. If you are interested in joining or starting a group – whether any that are listed above, or on another topic or for a different identity you hold – we would love to make that happen! Reach out to me at aballen@jtsa.edu to learn more about *Beth El B'Yachad - TBE Together*.

Abby Allen, Rabbinic Intern



JOSHUA HAMMERMAN, RABBI EMERITUS

On One Foot

I'm delighted to be sharing a new three-part adult ed seminar on Zoom this fall, a look back at one of the key moments for American Jewry over the past generation, the airing of the 9-part PBS series Abba Eban's "Heritage: Civilization and the Jews." We'll look back at what the series meant for us and how things have changed. At the same time, we'll look at the contents, which span 3,000 of Jewish history, and draw lessons from each episode. Viewing the broadcasts is recommended but not required for the class. The seminar is free, but registration is required and space is limited.

Go to <https://www.eventcreate.com/e/hammerman> to sign up. Sessions will be at 7:00 pm on November 12, 19, and December 3.

Go to <https://rabbijoshuahammerman.substack.com/p/register-for-my-series-heritage-civilization> to watch the videos.



Looking forward to seeing you then!

Rabbi Joshua Hammerman

Abba Eban's "Heritage: Civilization and the Jews" One Generation Later



Join Rabbi Joshua Hammerman on Zoom, on
November 12 at 7pm.

ABBA EBAN

At a time when some Jews are questioning their heritage, we look back at a project from 40 years ago that made lots of American Jews swell with pride.

Back in 1984, Abba Eban's PBS series, "Heritage: Civilization and the Jews," made an enormous splash, was viewed by 50 million people and won a [Peabody Award](#). This nine-part series tells the Jewish story from ancient times in Mesopotamia, through Roman antiquity and the Middle Ages, through the Holocaust to present-day America and Israel. In three Zoom sessions, we'll take a fresh look at Eban's work - and Jewish history itself - and discuss how his vision holds up 40 years later, at a time where world Jewry is in a very different (and some would say more perilous) place. At the same time, we'll follow the series in exploring the threads that define the Jewish experience, including 3000 years of its interaction with other civilizations.

The seminar will be led by Rabbi Emeritus Joshua Hammerman, author and award-winning journalist, and creator of the Substack, "[In This Moment: A Rabbi's Notebook](#)."

The nine "Heritage" videos are available for free online, including on [Rabbi Hammerman's Substack feed](#). Watching at least the first video in advance of the first session on November 12 is recommended but not required. Subsequent sessions are scheduled for November 19 and December 3.

The first session (November 12) will cover the ancient and rabbinic periods (the first three episodes), the second will span the Middle Ages to the dawn of modernity and the third will focus on the past few centuries, including America, the Holocaust and Israel, adding our own updated speculations on how Judaism has changed since October 7.

The sessions are free but RSVP (see link in my article above) is required in order to receive the Zoom link, which will be sent out as the first class draws near.

SHABBAT SERVICES

Friday Night services are held at 7:00 pm

Shabbat Morning services are held at 10:00 am

Our services may be seen on livestream

<http://www.tbe.org/tbe-live/>

All are welcome!

CELEBRATE SPECIAL OCCASIONS ON SHABBAT MORNING

Celebrate a birthday with our TBE family! We warmly invite you to celebrate your birthday with the congregation on Shabbat morning. During that service, we will invite you for a celebratory Aliyah. We hope you will share in that joyous moment. If possible, please let us know ahead of time which Shabbat you'll be attending, and we will gladly provide you with an Aliyah at that time. Please also note that we are proud to continue marking special milestone birthdays with personal blessings in addition to this new ritual. If you fall into that category, you may contact Eileen H. Rosner at rosnereileen@gmail.com to make the appropriate arrangements.

Celebrate an anniversary! On behalf of the entire congregation, we invite you to celebrate your wedding anniversary with the congregation with an Aliyah on Shabbat. If possible, please let us know ahead of time which Shabbat you'll be attending, and we will gladly provide you with an Aliyah at that time.

While it is most certainly not expected, if you would like to elevate your birthday or anniversary celebration and the congregation's joy by helping to sponsor Kiddush on the Shabbat of your Aliyah, we would be most grateful for your generosity. Please call Mindy Rogoff at 203-322-6901, ext. 301 or office@tbe.org.

Special Occasion?

Sponsor the Shabbat Announcements
(emailed every Thursday afternoon)

or

Rabbi Knopf's Shabbat Reflections
(emailed every Friday morning)

Donation of \$118

All sponsors will be acknowledged at the top of each of the eblasts and also listed in our bi-monthly Bulletin.

[Click here](#) to reserve your date.

WE WELCOME YOU TO JOIN US ON SHABBAT MORNINGS

We warmly welcome you to show up for services on Shabbat in whatever way is meaningful to you. A reminder: you don't have to attend services to come for lunch on Shabbat! Services begin at 10 am, and we get to lunch around 12:15 pm. You can also show up for and/or leave services any time:

- From 10 until about 10:30 am, we sing the joyous and soulful melodies of P'sukei D'zimrah, the preliminary service.
- From about 10:30 to 10:45 am is the morning service, Shabbat (including greatest hits like Shema and the Amidah).
- We take the Torah out at about 10:45 am, and chant from the Torah and Haftarah portions until about 11:30 am.
- The D'var Torah (sermon) takes place around 11:30 am.

Between 11:45 am-12:15 pm, we conclude the service with Musaf, Aleinu, and Adon Olam (we always invite children up to help lead some of these final prayers, and any kid who helps lead gets to pick a prize from the Rabbi's "Tchotchke Chest").

And for those who wish to partake, you are welcome to make a "L'chaim!" with us on a beverage of your choosing (whether alcoholic or non-alcoholic) after services.



SEEKING SHABBAT GREETERS

Do you like getting a warm "Shabbat Shalom" as you enter shul on Saturday morning?

Our greeting program has been extremely well received. To keep this program going, we need volunteer greeters like you.

For more information Contact Jon Eisenstein at jon.eisenstein@gmail.com

Thanks for helping make Temple Beth El a warm and welcoming place to be.

B'NAI MITZVAH

November 22, 2025

SLOANE COOPER

Daughter of Kahla and Gordon

Sister of Gavin

Attends Scofield Middle Magnet School

Mitzvah Project: Schoke Jewish Family

Service Kosher Food Pantry



MAZAL TOV TO...

Susan and Carl Shapiro on the birth of a granddaughter, Sophie Warren Shapiro, born to Maddie and Mitchell Shapiro.

Nancy and Jerry Kapchan on the birth of a granddaughter, Scarlett June, born to Aly and Brett Ackerman.



Share your family's simcha (engagement, marriage, birth, Bar or Bat Mitzvah of a child or grandchild) and other joyous event. Just contact the TBE office at office@tbe.org or 203-322-6901, ext. 301.

HONORABLE MENSCHEN TODAH RABAH TO OUR TORAH READERS

BARRY ERNER ★ AMANDA GEFFNER

RABBI GERRY GINSBURG ★ DEVRA JAFFE-BERKOWITZ

RABBI ABE FRIEDMAN ★ GARY KNOPF ★ LILAH KNOPF

RACHEL KNOPF ★ JOSH LEVINE ★ BERT MADWED

JENNA NAPACH ★ RABBI KLIEL ROSE ★ ZAKAI ROSE

JUDITH ROSENBAUM ★ SUSAN SCHNEIDERMAN

LAEL SHAPIRO

THANK YOU FOR SPONSORING KIDDUSH

DR. FRANCES GINSBURG
LESLIE and DAVID NAPACH

WE THANK OUR VOLUNTEERS

LORI DRUCKER, SUE SHAPIRO
SHARON TURSHEN, JEFF TURSHEN

THANK YOU FOR SPONSORING THE SHABBAT ANNOUNCEMENTS

LESLIE and DAVID NAPACH

CHECK US OUT ON

facebook

facebook.com/tbestamford/

BETH EL CARES

Beth El Cares focuses on chesed and tzedakah by helping the poor and unfortunate through mitzvot, both in our synagogue and the greater Stamford community. We welcome volunteers! This is the work we are currently engaged in. If you are interested in volunteering in any of these endeavors, please contact the person listed.

Reyut (Friendship): Committed to serving the needs of those in our TBE community, including friendly visits, assistance with errands and transportation, Shabbat bag delivery to hospitalized patients. Contact Melanie Massell at reyut@tbe.org or 203-274-1708.

Project Ezra: Providing shiva meals to the bereaved in the congregation. Contact Debbie Adler-Klein at dakmd75@gmail.com or 203-253-1664.

Serving the homeless: Help prepare and serve food — you can do either or both throughout the year. Contact Julie Rosenberg at [julierenbergsjp@gmail.com](mailto:julierosenbergsjp@gmail.com) or 203-273-6794.

High Holiday Food Drive: Contact Sharon Turshen at 203-323-3872

Christmas dinners at local homeless shelters: Contact Karen Resnick at kmr925@sbcglobal.net or 203-536-3115.

BETH EL CEMETERY ASSOCIATION

Information about the Beth El Cemetery Association, Inc. is available from:

Allan Lang at 203-327-6418
or
Eileen H. Rosner at 203-461-0506

Get involved, please...

Help Wanted! In order to maintain our vibrant and dynamic community, the Fund-Raising Committee needs more members to support TBE and volunteer their skills and talents. Many of these opportunities ask for very small-time commitments. Please consider getting involved with the:

Annual Appeal | Temple Rock | Cantor's Concert

If you are interested in volunteering, please contact us and we will give you more information.

Thank you!

Contact Ron Zussman rmzussman@gmail.com or Erica Newman execdir@tbe.org for information.

**Temple Beth El, Stamford
and
Congregation Beth El, Norwalk
Proudly Present:**

KESHER BETH EL
*Beth El Connections: Two Synagogues,
One Learning Community*



**IN PERSON SUNDAY MORNINGS GRADES K-7
ZOOM HEBREW TUTORIALS THURSDAY
AFTERNOONS GRADES 3-7**

- Monthly Sunday Morning Learning Program for ages 3-4
- Amazing Holiday Celebrations
- Experiential, Interactive Learning
- Small Group Hebrew Learning
- Weekly Tefilah (worship service) led by our clergy, teachers, and students
- **TRY US OUT FOR A YEAR!** For grades K-2, registration for the first year is open to non-members; tuition is reduced 50% for the first year for members.

For more information contact Leo Linder:
eddir@tbe.org.

K'TANIM

A monthly Jewish learning Sunday drop-off program for 3 and 4 year-olds.
9:00am-11:45am

**GAMES! MUSIC! TORAH! HOLIDAYS!
STORIES! CRAFTS! BLESSINGS! FUN!**

You do not need to be a member
of a synagogue to participate.

Questions? Contact Leo Linder at eddir@tbe.org.



We've had a great start to the year in Keshet! Classes have explored the fall holidays, brushed up on their Hebrew and tefillah skills, and jumped into Jewish values. And we've also gotten to know the clergy, as students study the parsha and rabbinic teachings with Rabbi Knopf, sing and chant trope with Cantor Kaplan, and dance and speak Hebrew (not at the same time!) with Rabbi Paskind. There are so many awesome things to look forward to, as well, like the 6th and 7th grade trip to the Anne Frank exhibit in NYC and our Havdalah Fest in November.

Interested in joining us or want to learn more? Email me (eddir@tbe.org) for more info, or to arrange a trial day!

Leo Linder
Keshet Director



We welcomed families back to Keshet with a musical Opening Day Assembly in the TBE Sanctuary.

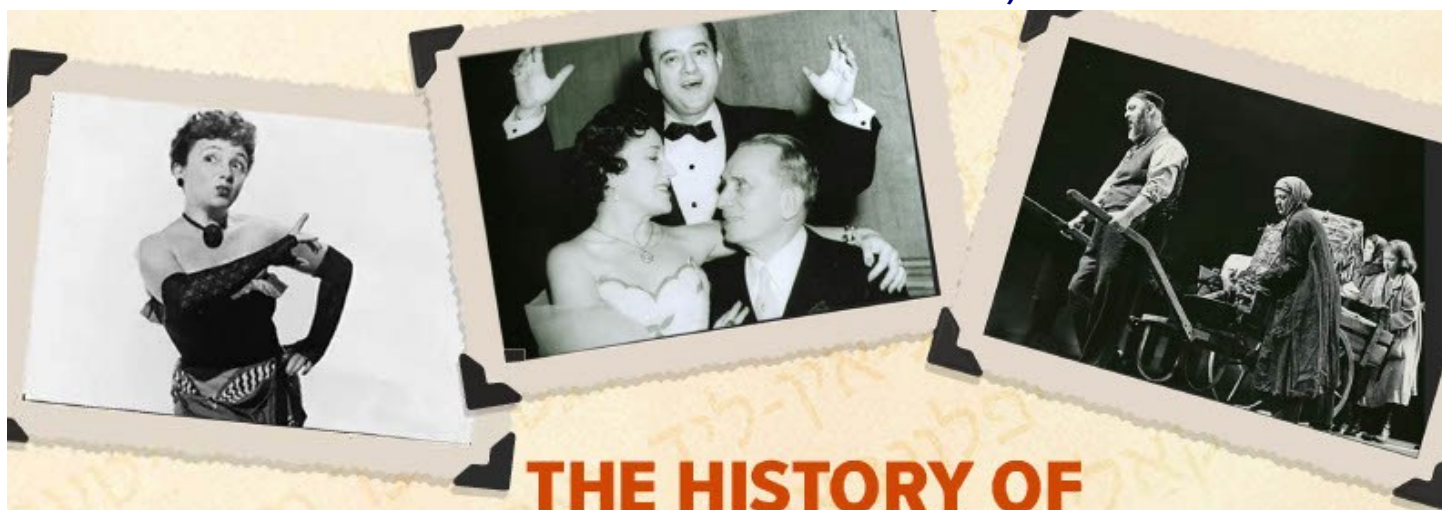


Emissary Koren Levi led our students in games and team-building activities while teaching students about his life in Israel.



Students from all grades made decorations to liven up the sukkah at each shul!

In tribute to Dr. Hesh Romanowitz, z'l



THE HISTORY OF THE AMERICAN YIDDISH THEATER

A musical overview with **ZALMEN MLOTEK**, Artistic Director
of the National Yiddish Theater Folksbiene

NOV. 6 2025 7PM

Temple Beth El

350 Roxbury Road, Stamford, CT
203 322-6901

Register at:

tinyurl.com/yiddish11-6

This program is free of charge

A NOSH WILL BE SERVED
FOLLOWING THE PROGRAM, VU DEN?

Co-Sponsors

Bennett Center for Judaic Studies, Fairfield University | United Jewish Federation of
Stamford, New Canaan and Darien | UJA — JCC Greenwich | Congregation Agudath Sholom
Jewish Historical Society of Fairfield County | Temple Beth El | Temple Sholom Temple Sinai
Young Israel of Stamford

Presented in tribute to Dr. Hesh Romanowitz ז"ל and his parents, Eva and Abe
Romanowitz ז"ל, lovers of the Yiddish theater.

A one-of-a-kind journey of the
Yiddish theater, from its
European Roots to Ellis Island,
Second Avenue and beyond.
Translating as he sings, Mr.
Mlotek weaves storytelling-in-song
which take us from despair to hope to
entertainment with musical influences of operetta,
Tin Pan Alley and Broadway.



Featuring a special appearance by
Cantor Katie Kaplan!



TBE Musical Kabbalat Shabbat

Friday, November 7 at 7:00pm

Kabbalat Shabbat led by

Cantor Katie Kaplan



Rabbi Michael Knopf



Leo Linder



Featuring special musical guests Em Lebow & Barbara Orwick



Can't join us in person? Join us on Livestream:

<http://www.tbe.org/tbe-live/>

Temple Beth El, 350 Roxbury Road, Stamford, CT 06902
203-322-6901 www.tbe.org



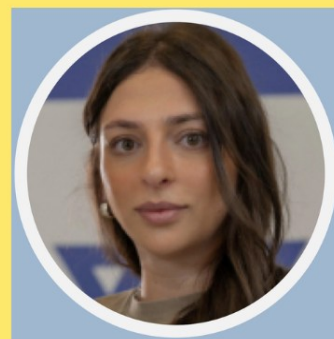
Temple Beth El Welcomes Guest Speaker

EDEN REFAELOVICH

UJF Community Shlichah

Topic:

Being A Child During Wartime



Friday November 7, 2025

Kabbalat Shabbat at 7:00pm

Presentation at 8:00pm

Eden will speak about her personal experience growing up during conflict in Israel. She will recount living through the Second Lebanon War, and the impact on her family when a missile hit her home in 2006.

A special Oneg Shabbat will follow in honor of the release of the hostages co-sponsored by Marilyn and Mitch Sofer and Debra Adler- Klein.

All are welcome!

Can't join us in person? Watch on livestream: <http://www.tbe.org/tbe-live/>



Temple Beth El

350 Roxbury Road, Stamford, CT

www.tbe.org | 203-322-6901 | office@tbe.org



TBE Adult Learning

Tradition! What ritual, Jewish law & equality are in 21st Century practice

Learn with Rabbi Gerry Ginsburg as he examines thoughtful, contemporary questions about egalitarian practices, including time-bound mitzvot, kippah/tallit/tefillin, leading services and commandedness.

A three-session mini-course on Sunday mornings at 10:00 am on November 9, 23 and December 7.



Come early (optional) and also join us for morning minyan at 9 am.

You can register for the course at bit.ly/tr21c.

All backgrounds are welcome. No prior knowledge is necessary.

Temple Beth El
350 Roxbury Road, Stamford, CT
203-322-6901 | www.tbe.org | office@tbe.org



Presented by the Adult Education and Kulanu Committees

Reel Time

Israeli and Jewish-themed movies in the TBE social hall
with facilitated discussions after the film

GREGORY
PECK

DOROTHY
McGUIRE

JOHN
GARFIELD

GENTLEMAN'S AGREEMENT

Thursday, November 13

7:00 pm

\$18/person

Refreshments served

The 1947 award-winning film about a reporter who pretends to be Jewish in order to cover a story on anti-Semitism in NYC and the affluent communities of New Canaan and Darien.

Reserve your seat now!

<https://bit.ly/tbe1113>

20th
CENTURY FOX
STUDIO CLASSICS



FAITH IN ACTION: JEWISH VALUES AND THE PURSUIT OF JUSTICE



Join us for a yearlong pilot program for Temple Beth El teens in grades 8-12 that explores how Jewish faith and values inspire action in the world. The program will empower students to engage with social justice through learning, discussion, relationship-building, and a culminating justice-themed trip.

Led by Rabbi Michael Knopf



4 IN PERSON GATHERINGS*

NOVEMBER 15

DECEMBER 20

JANUARY 31

FEBRUARY 21

Back up date if needed: March 28



EVENINGS



TEMPLE BETH EL

350 Roxbury Rd
Stamford, CT 06902



\$180/student plus cost of trip
[Click here](#) to register

*Participation in at least 3 of 4 cohort sessions is required to join the trip.

CAPSTONE TRIP: SPRING 2026

A one-day, justice-centered travel experience to explore Jewish identity and activism in context. Due to travel logistics, this year's pilot will focus on locations within a day's reach.

Trip options will include New York City, Boston, Newport or Philadelphia.

Trip date: Sunday, April 19, 2026

2025 Sisterhood Exclusive Paid-Up Membership Bunch!

Sunday, November 16, 2025
9:45 AM – 11:00 AM

~~~~~

Then stay for A Very Special Presentation from 11:00 AM ~ Noon

in conjunction with **TBE Kulanu**

with our very own, **Cantor Katie Kaplan**

**Healing the Past: Reclaiming German Citizenship and Bearing Witness**



Brunch is **FREE** for all paid-up Sisterhood Members and begins at **9:45AM**

- Dues are still only \$36.00! If you would like to join Sisterhood and attend the brunch, [click here](#).
- Members, [click here](#) to RSVP

**Cantor Katie Kaplan's program starts at 11:00AM**  
and it is open to the entire TBE Community with a dessert buffet

---

## Healing the Past: Reclaiming German Citizenship and Bearing Witness:

This past June, Cantor Katie Kaplan traveled to Germany with her father and sister to visit the towns where her grandparents had lived before fleeing Nazi persecution. After years of research and personal healing, she reclaimed her German citizenship and journeyed to honor her family's memory by laying and visiting Stolpersteine (stumbling stones). Hear her story of healing, gratitude, confronting antisemitism, teshuvah, return, family, and tikkun.

---





TEMPLE BETH EL YOUNG FAMILIES INVITES YOU TO...

# FALL FESTIVAL

SNACKS- CRAFTS-GAMES-HAYRIDES

**NOVEMBER 16**

**3:00 PM - 5:00PM**

**350 ROXBURY ROAD STAMFORD**

**IN THE TBE SOCIAL HALL**

**REGISTER HERE**



**QUESTIONS? CONTACT  
YOUNGFAMILIESTBE@GMAIL.COM**



# Let's play mah jong and canasta!



**TBE Sisterhood invites you to a fun night!**

## **mah jong**

Beginners and advanced players welcome.  
Bring your friends - members and non-members.

We have instructors and refreshments!!!

---

## **Canasta**

Canasta lessons will be offered to a maximum of eight beginners. Advanced players are welcome if we have groups of four.

**Tuesday, November 18 & December 9 at 7:00pm**

in the TBE social hall

Fee: \$10 per person to cover security cost

PLEASE RSVP, so we know how many tables we need, to  
Fran Ginsburg at [ginsstamf@gmail.com](mailto:ginsstamf@gmail.com) or 203-979-9570.

Temple Beth El Sisterhood, 350 Roxbury Rd, Stamford, CT 06902  
[www.tbe.org](http://www.tbe.org) | 203-322-6901



# Rap with the Rabbi

*Real talk, real Torah, real connection.*

## **Open Office Hours with Rabbi Michael Knopf**

Thursday,

*November 20*

1:30–3:00 PM

**Temple Beth El**

**350 Roxbury Rd**



Photo: Rabbi Michael Knopf

Come by, pull up a chair, and connect.

This is your chance to ask questions, share ideas, or just chat with Rabbi Knopf in a relaxed, group setting.

No agenda—just conversation, curiosity, and community.

RSVP required so we can plan appropriately. [Click here.](#)



ALL  
ARE  
WELCOME!

# WHISKEY TASTING

Co-sponsored by:

**CAS Men's Club of Congregation Agudath Sholom  
The Men's Club of Temple Beth El  
The Brotherhood of Temple Sinai  
United Jewish Federation**

Come join us for an evening of camaraderie, conversation, and the chance to sample fine whiskeys (including one Israeli whiskey) and local kosher chocolates.

Early registration  
appreciated at:  
<http://www.ujf.org/whiskey>

**\$20 per person**  
**Early bird pricing**  
**\$25 after Nov 1st.**

Temple Sinai Stamford  
458 Lakeside Drive



**NOV 20**

**7:30 PM**



# ROOTS SHABBAT

Friday, November 28 and December 26, 2025

7:00 pm

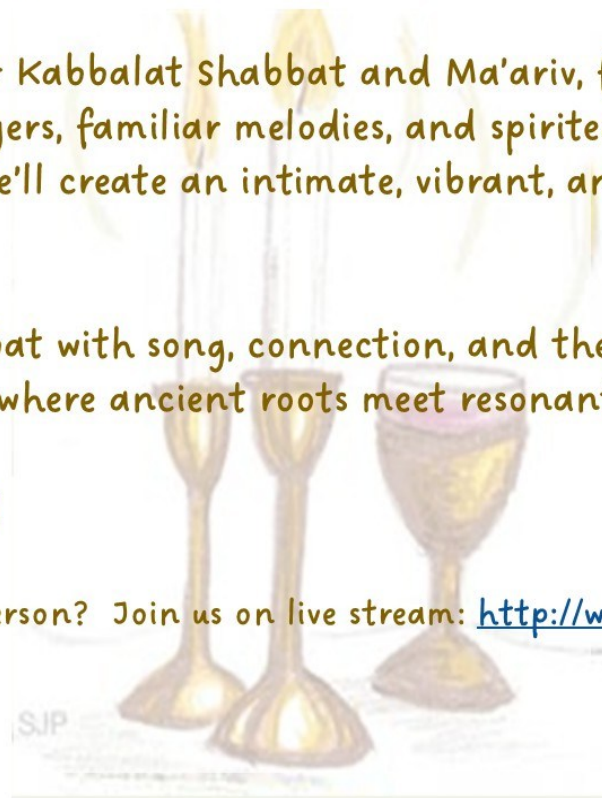
Step into an unplugged Shabbat evening service that blends the depth of tradition, the warmth of connection, and the energy of joyful community.

Through a fuller Kabbalat Shabbat and Ma'ariv, focused on traditional prayers, familiar melodies, and spirited congregational participation, we'll create an intimate, vibrant, and uplifting atmosphere.

Celebrate Shabbat with song, connection, and the warmth of shared spirit — where ancient roots meet resonant voices.

All are welcome!

Can't join us in person? Join us on live stream: <http://www.tbe.org/tbe-live/>



Temple Beth El  
350 Roxbury Road, Stamford, CT  
[www.tbe.org](http://www.tbe.org) | 204-322-6901 | [office@tbe.org](mailto:office@tbe.org)



---

## *Koleinu Shabbat*

*Friday, December 5, 2025*

*7:00 pm*



"Koleinu" means "our voices," and this special Shabbat evening service invites us to join our voices in song, prayer, and reflection.

With seating in the round, we'll create an intimate and uplifting atmosphere, blending traditional Hebrew prayers, soulful melodies, and moments of quiet intention to foster connection and spiritual renewal.

Stay to enjoy an Oneg Shabbat after the service.

All are welcome.

Due to the special setup for this service and its location in the social hall, there will be no livestream.

Temple Beth El  
350 Roxbury Road, Stamford, CT  
[www.tbe.org](http://www.tbe.org) | 203-322-6901 | [office@tbe.org](mailto:office@tbe.org)





# Join TBE Hosts at Home for TASTE OF TBE!

Mingle with fellow congregants while enjoying a delicious home-cooked meal! L'Chaim!

**When: Saturday, December 6<sup>th</sup>, 7pm**

**Where: A Host Home in Stamford!**

**Cost: \$75 per person** \*100% goes to TBE

**Click here** to register and view the meal types being offered.  
Select your top three choices and find out where you'll be dining the week of December 1.

Thank you to our hosts for their generous hospitality!

Kerrin & Stephne Behrend

Jeffrey & Lisa Manheim

Barry Erner & Melissa Dreyfus-Erner

Mitch & Marilyn Sofer

Neil Katz & Leslie Glenn

Jeff Cohen & Malerie Yolen-Cohen

Alan Benet & Sheila Romanowitz

Sue Frieden

Parry Berkowitz & Devra Jaffe-Berkowitz

Bob Schumacher & Joyce Resnick

Jeffrey Perry & Robin Evans

Ron & Nicole Zussman

**DONATE ONLINE**  
Go to: [www.tbe.org/donate/](http://www.tbe.org/donate/)

### OPPORTUNITIES FOR GIVING

- ☒ Adult Education Fund
- ☒ Paver Walkway Campaign
- ☒ Beth El Cares
- ☒ Rabbi Knopf's or Cantor Kaplan's Mitzvah Fund
- ☒ Goldberg Scholarship Fund
- ☒ Emmet Manheim Memorial Playground
- ☒ Kiddush Fund
- ☒ Matthew Klein Memorial Sanctuary Garden Fund
- ☒ Music Fund
- ☒ Project Ezra
- ☒ Religious School Fund
- ☒ Frank and Rose Rosner Memorial Fund
- ☒ Security Fund
- ☒ Shabbat Bags
- ☒ Youth Fund

### CONTRIBUTING SHARES OF STOCK TO TEMPLE BETH EL

One way to boost your charitable contributions to Temple Beth El is to give shares of appreciated stock instead of cash. You do not pay any tax on your capital gain, and your charitable deduction is the shares' entire fair market value.

Beth El members may contribute shares of stock to satisfy their dues pledge, their annual fund pledge, and other contributions to the Temple.

After consulting your tax advisor, please contact the TBE office at 203-322-6901.

### DID YOU KNOW...

TBE offers free family membership for the first year to any member's child on the occasion of his or her marriage. For more information, contact Mindy Rogoff at 203-322-6901, ext. 301.



### TREE OF LIFE

A beautiful way to commemorate a special occasion is to purchase a "leaf" on our beautiful "Tree of Life" sculpture adorning our Temple lobby. There are many more leaves available for your own personal inscriptions.



The following categories are still available:

|                                           |                |
|-------------------------------------------|----------------|
| <b>Triple Chai</b>                        | <b>\$1,000</b> |
| <b>Silver Leaves - Gold Border</b>        | <b>\$750</b>   |
| <b>Silver Leaves (very few remaining)</b> | <b>\$250</b>   |

Call the office for information 203-322-6901.



### INFORMATION FOR YOU...

When making a donation an acknowledgement will be mailed to the designee for donations of \$10 or more. Donations of less than \$10 will be acknowledged only in the Bulletin. All donations will be published in the Bulletin unless you state that you wish to be anonymous.

### HAVE YOU VISITED OUR WEBSITE?

[www.tbe.org](http://www.tbe.org)

Find out about the latest news and upcoming activities ... access our online membership directory ... register for events and make donations ... connect to TBE's Twitter and Facebook pages ... and much more.



## WE ARE GRATEFUL FOR YOUR CONTRIBUTIONS

### IN HONOR OF:

**THE GINSBURG FAMILY'S DONATION OF A PULPIT COVER  
DEDICATED TO RABBI GERRY GINSBURG**

Marilyn & Mitch Sofer, Sue & Carl Shapiro

**THE BIRTH OF MARGOT ADLER**

Liz & Scott Krowitz, Lois Stark & Gary Lessen

**MARY C. SILBERMAN ON HER BIRTHDAY**

Carol & Allen Krim

**BRUCE KAHN ON HIS BIRTHDAY**

Carol & Allen Krim

**THE BIRTH OF BENJAMIN SCHNEIDER**

Zeena Hine

**THE MARRIAGE OF MORGAN TEMPE AND BEN HULBERT**

Caryl Ferber Poser & Peter Poser

### KESHER BETH EL

*In memory of...*

Phyllis Braunstein, z'l by Sara & Daniel Levinson

### ADULT EDUCATION FUND

*In honor of...*

My TBE family for their love and support by Mindy Rogoff

*In memory of...*

Norman Stone, z'l by Rhonna & Brian Rogol

### RABBI MICHAEL KNOPF MITZVAH FUND

*In honor of...*

Rabbi Michael Knopf for his teachings and spirituality during the High Holidays by Shirley Halprin

Lilal Knopf becoming a Bat Mitzvah by Susan Frieden, Robin Evans & Jeffrey Perry, Karen & Daniel Davis, Linda & Joe Rothman

*In memory of...*

Eric Kirch, z'l by Madelyne Kirch

Daniel Shameer, z'l by Marge Shameer and Sherry Cohen

### CANTOR KATIE KAPLAN MITZVAH FUND

*In honor of...*

Cantor Katie Kaplan for musically and spiritually lifting us during the High Holidays by Shirley Halprin

The birth of Benjamin Schneider by Marlyn & Rich Agatstein

*In memory of...*

Norman Stone, z'l by Joan & Harvey Bucholtz, Susan Frieden

### FRANK AND ROSE ROSNER MEMORIAL FUND

*In memory of...*

Malvina Rothman, z'l by Linda & Joseph Rothman

*In honor of...*

Eileen H. Rosner by Meryl & Hank Silverstein

### RABBI MICHAEL ROSE KNOPF continued from page 3...

created in God's image. And it points us back to the vision of the prophets: Justice rolling down like water, peace embracing the earth.

I wrote this prayer to affirm commitments I believe we all can hold in common: Justice, human dignity, compassion, and the health of our democracy. My hope is that these words not only lift us in prayer but also inspire us to live as partners in the sacred task of building a society that reflects the image of God in every human being.

#### A Prayer for the United States of America (2025)

by Rabbi Michael Knopf

Our God and God of our ancestors, bless and protect the United States of America, and help us preserve, renew, and advance the ideals and institutions that have been our security and our strength — ensuring equal opportunity and justice for all, eradicating oppression, both within and beyond our borders.

Guard us against the corrosion of our common life — from cruelty becoming custom, from deception becoming doctrine, from violence becoming virtue. Shield us from those who would criminalize dissent, intimidate opposition, and scapegoat the vulnerable and marginalized. Fortify us to oppose unjust decrees, remembering that “any law that uplifts human dignity is just, and any law that degrades the human spirit is unjust.”

Protect us from leaders who abuse their power, who sow fear and division, corrupt justice, and trample the defenseless. Grant us the courage to remind them — through our voices and with our votes — who they serve, and before Whom they stand.

Spare us from standing idly by. Where we see degradation or persecution, move us to march. Where we see tyranny, rally us to resist. And when we feel despair, grant us the audacity to hope.

Enable us to remember that “We the People” — of every skin color and national origin, every ethnicity and creed, every gender identity and sexual orientation, every ability and disability — are all siblings, created equally in the Divine image, and called upon by our Heavenly Parent to safeguard one another and to dwell together in peace.

Ready us to join together in that spirit, so that we may make “justice roll down like water, and righteousness like a mighty stream,” and speedily bring about the day when “nation will not take up sword against nation, and they will never again know war.”

May the words of our mouths and the meditations of our hearts be acceptable to You. And let us say, “Amen.”

Rabbi Michael Knopf



## REMEMBERING OUR LOVED ONES



Gail & Jack Abrams.....**BESS ABRAMS**  
 Beverly & David Stein.....**SEYMOUR ABRAMS**  
 Susan & Richard Blomberg.....**NORMAN BLOMBERG**  
 Susan & Richard Blomberg.....**PHILIP BLOMBERG**  
 Susan & Richard Blomberg.....**ROSE BLOMBERG**  
 Susan Rich .....**JERRY COHEN**  
 Stacy and Donald Cooper .....**JOSEPH COOPER**  
 Joan & Robert Rosenthal .....**EVE DOCTOR**  
 Amy Fishkow .....**YETTA FISHKOW**  
 Susan Wise .....**HYMAN FRANKEL**  
 Madge & Michael Kellick .....**LOUISE GREEN**  
 Lori & Stuart Ratner .....**EDYTHE LAVINE**  
 Barbara Malloy .....**HOWARD MALLOY**  
 Melanie Massell.....**LEONARD MASSELL**  
 Roni & Allan Lang .....**RUTH LANG**  
 Lori & Stuart Ratner .....**JEROME RATNER**  
 Fran & Rabbi Gerry Ginsburg .....**ESTELLE ROSEN**  
 Meira Rosenberg & David Friedman ...**SEYMOUR ROSENBERG**  
 Rosenblum Family .....**HARRIET ROSENBLUM**  
 Jim Rothkopf .....**SALLY ROTHKOPF**  
 Roslyn & Merritt Nesin.....**PEARL SHAPIRO**  
 Marsha Kaiser Shendell & Family .....**JEFFREY SHENDELL**  
 Mary C. Silberman .....**ALAN SILBERMAN**  
 Karen & Mark Feder .....**SUZANNE STERN**  
 Ronnie & Edward Fein .....**WILLIAM VAIL**  
 Phyllis Walzer .....**FRED WALZER**  
 Debora & Paul Weinstein .....**ALBERT WEINSTEIN**  
 Harriet & Seymour Weinstein.....**GOLDIE WEINSTEIN**  
 Dana Horowitz & Peter Wolly.....**VAL WOLLY**

### MEMORIAL PLAQUES



Inscribe the names of your loved ones on a plaque in our Chapel foyer along with a light to commemorate their *yahrtzeit* and *yizkor* observances throughout the year.

For details, contact Mindy at [office@tbe.org](mailto:office@tbe.org) or 203-322-6901, ext. 301.

### RABBI JOSHUA HAMMERMAN MITZVAH FUND

#### *In memory of...*

George Wolfson, z'l by Sheila & Daniel Wolfson

### STEVEN AND LIEBA LANDER LECTURE FUND

#### *In memory of...*

Norman Stone, z'l by Sharon & Jeff Turshen

## IN MEMORY OF:

### **NORMAN STONE, z'l**

Marsha Colten & Robert Cohen, Ellie Mirne & Jim Popper, Alan Benet, Phyllis & David Amerling, Denise & David Greenman, Kinneret Chiel, Roni & Allan Lang, Debbie & Jack Goldberg, Harriet & Seymour Weinstein, Rosalea & Dick Fisher, Liz & Scott Krowitz, Marsha Matthews, Lorelee & Phil Granowitz, Phyllis & George Heller

### **CAROLYN NADEL FARIN, z'l**

Marsha Colten & Robert Cohen

### **MICHAEL MANHEIM, z'l**

Marsha Colten & Robert Cohen

### **MIRIAM MADWED, z'l**

Marsha Colten Cohen & Robert Cohen

### **GARY TEITELMAN, z'l**

Miriam & Steve Sosnick, Denise & David Greenman, Sharon & Jeff Turshen, Liz & Scott Krowitz, Jaffa & Pinchas Gross, Marsha Matthews

### **CRAIG SUCHIN, z'l**

Marsha Matthews

### EMMET MANHEIM PLAYGROUND FUND

#### *In memory of...*

Michael Manheim, z'l by Dayna & Arin Hayden, Shira & Marc Nerenberg, Liz & Scott Krowitz, Irma Ross, Temple Beth El Board of Trustees

Emmet Manheim, z'l by Fredda & Edward Goldstein

### SHABBAT BAG FUND

#### *In memory of...*

Paula Shulman, z'l by Caroline Temlock Teichman

### WE MOURN THE PASSING OF...

**GARY TEITELMAN**, brother of Dana Weinberg  
**CHUCK ALBERT**, father of Dayna Patashnik  
**DANIEL SHAMEER**, son of Marge Shameer  
 and brother of Sherry Cohen  
**ALAN RICH**, father of Michelle Moskowitz

### SHIVA NOTICES AVAILABLE ON-LINE

Congregants who are looking for shiva information can now quickly look online instead of searching their inbox for the announcement or calling the synagogue office. Just go to TBE's website ([www.tbe.org](http://www.tbe.org)) and click "Shiva Notices" under the WHAT'S NEW menu.

*Happy Hanukkah*

*from*

*The Staff and Board of Trustees  
 of Temple Beth El*



# Noah's Ark



Have you seen our replica of Noah's Ark in the lobby by the main office? It is walnut, measures 76" by 72", and has 149 plaques and 18 larger animals that can include engraved messages in honor of a family's children or anyone else, or in honor of a significant family event .

We are asking you to consider honoring your children (or anyone else) by donating \$250 to this project and buying a plaque. We hope that you might be further moved to buy one of the remaining animals for a donation of \$1,000.

*Proceeds to benefit Kesher Beth El.*



Is honored to serve the Stamford Jewish Community with compassion, affordability and personal service.



Thomas M. Gallagher

104 Myrtle Avenue  
Stamford, CT 06902

203-359-9999  
[www.gallagherfuneralhome.com](http://www.gallagherfuneralhome.com)

*We are independently owned and NOT affiliated with Leo P. Gallagher & Son Funeral Home*





aviva maLler

203-554-6758

magical & meaningful  
events

avivamaLlerphoto@me.com  
www.avivamaLlerphotography.com

WHILE THE PLANNER ENVISIONS  
THE AMBIANCE OF CELEBRATION,  
HER CONCEPT IS INSPIRED BY THE SOUL  
AND SPIRIT OF HER CELEBRANTS.



### Israeli Dance classes offered at Temple Beth El

#### Beginner classes!

Prior experience is not required.

Learn classic and modern dances to popular songs;  
Enjoy the social aspect! Reap physical & mental benefits!

Thursday evenings: 6:45 PM - 7:45 PM

Sunday afternoons: 1:00 PM - 2:00 PM

**Special events: Available to teach, lead and/or perform:**  
Temple events, Hebrew school, weddings, bridal showers, birthdays,  
Bar/Bat Mitzvahs, assisted living venues

**Contact Leng** Phone: 203.912.4086 IsraeliDanceTeacher@gmail.com  
www.CTIsraeliDance.com

## HOW WILL YOU ASSURE JEWISH TOMORROWS?



Commit to leaving a legacy and help ensure that Temple Beth El will be part of the fabric of the Stamford Jewish community for many years to come. [Click here](#) for our LIFE & LEGACY Honor Roll.

TEMPLE BETH EL  
350 Roxbury Road  
Stamford, CT 06902  
[www.tbe.org](http://www.tbe.org)



To create your legacy contact Erica Newman  
[execdir@tbe.org](mailto:execdir@tbe.org) | 203-322-6901, ext. 304



aviva maLler

203-554-6758

PHOTOGRAPHY

avivamaLlerphoto@me.com  
www.avivamaLlerphotography.com

WHILE THE PHOTOGRAPHER IS  
NEVER IN PHOTOGRAPHS;  
HER REFLECTION IS SEEN IN THE EYES  
OR THE VERY SOUL OF HER SUBJECTS.

Celebrations | Bar/Bat Mitzvahs | Weddings | Corporate Events  
Galas | Performances | Family Photos | Headshots

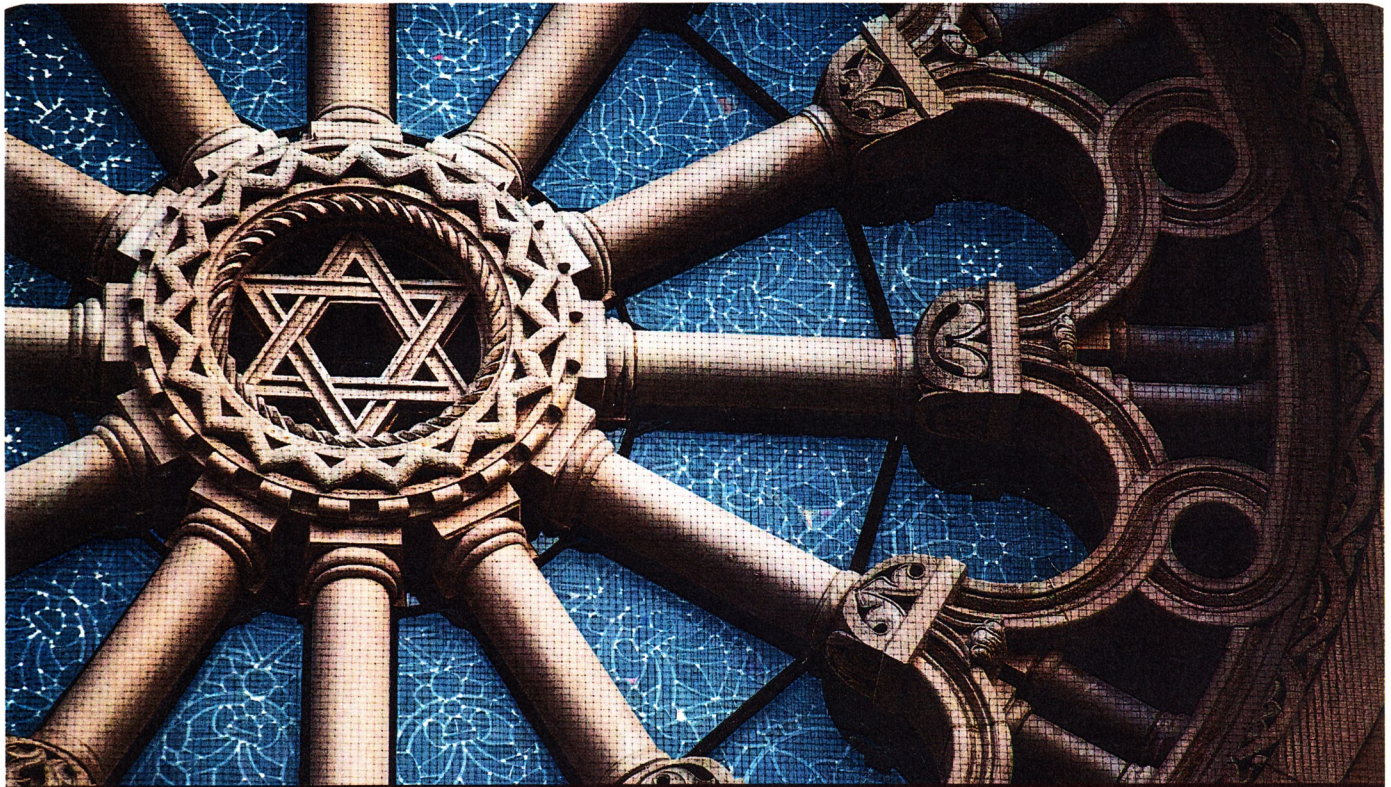
Check out our special website  
Dedicated to TBE's event space

[www.thebigeventspace.com](http://www.thebigeventspace.com)

Please let your friends and business  
associates know how we can fulfill their  
celebratory and meeting needs.

The deadline for the  
January-February 2026 Bulletin  
will be Monday, December 1, 2025.





TAKING CARE OF EACH OTHER  
*is what community is all about.*

**WE'RE PROUD TO SERVE** our community with personal, compassionate care.  
As your Dignity Memorial® professionals, we're dedicated to helping families create  
a unique and meaningful tribute that truly honors the heritage of the Jewish faith.

*We invite you to contact us today to learn more.*

Dignity®  
MEMORIAL

✧ LIFE WELL CELEBRATED™ ✧

**LEO P. GALLAGHER & SON**

FUNERAL HOME

STAMFORD

203-327-1313 [LeoPGallagherStamford.com](http://LeoPGallagherStamford.com)